



EuRec Shredder S 19

S 19.00, S 19.05 and S 19.10 Series

TECHNICAL DATA

Drive: Electrohydrostatic or dieselhydrostatic with automatic reverse function

Drive performance: Diesel motor (D) approx. 280 kW or electric motor (E) 2 x 90 kW

Gearbox: Nominal torque 190,000 Nm, peak torque 230,000 Nm

Weight: Approx. 15 - 22 tons in dependence of version and equipment

Hydraulic system: Performance-controlled (during load, hydraulic motors go to lower speed, and thus increase the torque at the shredding shafts)

Discharge conveyor: Width 1,200 mm, discharge height approx. 4,000 mm (standard)

Tool system: 2 patented, synchronously rotating shafts with engaging and in a row gripping tool heads, available in different designs

Shaft speed: Rated speed 15 - 32 rpm, continuous regulation 0 - 32 rpm

Feeding area above the tool shafts: Length 1,535 mm x width 1,440 mm

VERSIONS:

S 19.00: On base frame for stationary use or on hook-lift frame with container wheels, optionally with wheel axle for semi-mobile use

S 19.05: Mounted on crawler chassis, manoeuvring with radio remote control

S 19.10: Stationary on base frame with separately positioned drive unit

FIELDS OF USE:

Domestic waste, residual waste, industrial waste, mixed construction waste, wood waste, demolition wood, logs and root stocks, cable drums, railway sleepers, pruning, plastics, aluminium profiles, scrap metal, roofing paper, bituminous sheetings, etc. are shredded with the EuRec Shredder S 19 with low wear of tools. Even difficult to treat material like mattresses, carpets, tires, etc. are torn. During the shredding process, organic waste parts are prepared for further treatment.

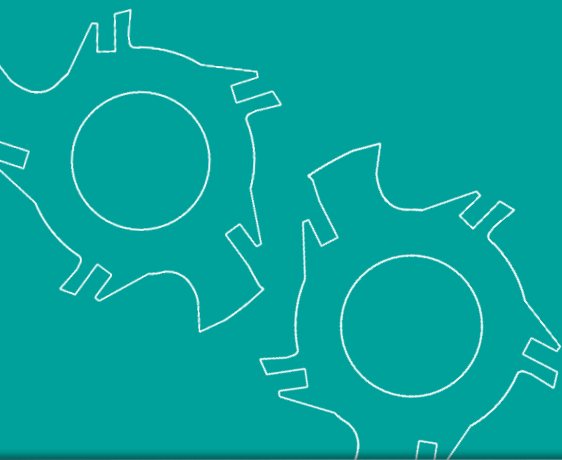
THROUGHPUT*:

Domestic waste: Up to 65 t/h

Waste wood: Up to 80 t/h

Bulky refuse and industrial waste: Up to 40 t/h

* depending on material composition, required output grain size, type of feeding, etc.



	S 19.00	S 19.05	S 19.10
Radio remote control	inclusive	inclusive	inclusive
Tipping hopper	inclusive	inclusive	optional
Hopper extension	optional	optional	optional
Wheel axle without StVZO*	optional	not available	not available
Special tools	optional	optional	optional
Breaker bar	optional	optional	optional
Discharge height higher than > 4 m	optional	optional	optional
Discharge belt monitoring	inclusive	inclusive	inclusive
Overbelt magnet (various)	optional	optional	optional

* German road traffic regulations

Contact us today, our team of experts will give advice and assistance.

Subject to modifications.



AUTHORIZED EUREC DEALER

Zakład Urządzania i Utrzymania Zieleni A. Popek, M. Popek Sp. J.

Miedziana 3 / 31567 Kraków / POLAND

Phone: +48 12 412 28 12

www.eurec.pl • www.zaklad-zieleni.com.pl