

THE BEAST® HORIZONTAL GRINDERS

WEAR PARTS CATALOG



Ready to Reorder?

Contact your local authorized Bandit
parts dealer, or call 989-561-2270 (ext. 2)



Bandit
INDUSTRIES, INC.

ABOUT THE BEAST XP-SERIES

INTRODUCTION



IT'S NO COINCIDENCE THAT WE CALL IT THE BEAST®.

The Beast XP-Series Horizontal Grinders are able to process an amazing array of materials, turning forest waste and woody municipal waste into a valuable product. Process stumps, logs, brush, wet leaves, whole trees, landscape waste, pallets, railroad ties, telephone poles, housing demolition, sawmill waste, logging, chip mill and paper mill waste, and more!

The most important benefit of The Beast is the quality and uniformity of the end product. Breaking down material by cutting, splitting, grinding, and now also by chipping, provides a multitude of options for producing a desired end product. Various tooth options, screens of almost any size or shape, and the ability to change the infeed conveyor feed speed allows you to produce material uniform in size and consistency to bring top dollar for your product. Tool options controlling the cut enable The Beast to deliver the best mulch products, the most uniform raw material for pressed board, the most acceptable boiler fuel, and the best hot mix asphalt supplement from shingles.

And The Beast keeps on getting better. Introduced in 2013, The Beast XP-Series incorporates over 35 specific enhancements across eight categories that improves the utility of the Beast in every way. XP-Series improvements completed in 2015 make The Beast even better. More than 40 enhancements across the Beast line added additional production and performance while significantly reducing operating costs. Among those include a 30-tooth cuttermill option for the Model 2680XP and 3680XP, the most popular horizontal grinders in The Beast lineup. Other enhancements include a faster mill speed, a faster 6-speed infeed conveyor speed, a proportional drive option to match infeed speed to engine load, a dual-stage discharge conveyor, and many other improvements designed to increase the life of wear areas, while also reducing maintenance costs. In most applications, XP enhancements and options have increased Model 2680XP and 3680XP production by 50 percent!

For detailed information on any model, please contact Bandit Industries or your local Bandit dealer for a specific product brochure.

CUSTOMER TESTIMONIALS

INTRODUCTION



WHAT OTHERS HAVE SAID ABOUT THE BEAST:

Jerry Lambert Testimonial

"When we first started grinding shingles, the product size was 1/2-inch-minus. It took multiple pieces of machinery to get it down to that size to meet the spec. Today we're doing it with one machine, and that machine is the Beast. We're running 10 machines nationwide. Now they're asking for 3/8-inch-minus with 100 percent passing a 3/8-inch screen and 95 percent passing the No. 4 sieve, which is almost like sand. We've tried this before with other machines to try to get them to hit this spec. So far the only one that that's hit it is The Beast."

-- Jerry Lambert, operations manager for Recycling and Processing Equipment

Mike Kachur Testimonial

"I worked my way up through what I could afford, but I always wanted a new Beast. They're just built better, heavier, and worth the investment. So I just kept working and made my way up to where I could buy one. And this is how I know I've made it, that I'm a success—I have a Beast."

-- "Paying Dues" Bandit Bits Fall/Winter 2013

Kevin Wood Testimonial

"Knowing what I know about how the mills are set up and the differences there, I like the way the mill is set up in The Beast. I believe it's a safer setup, not to mention the feed rate of these machines is a lot faster. It processes material much easier. The customer service and support that we get from Bandit is second to none, hands down. We don't have a lot of problems with the new machine, but Bandit is there to help, anytime you need them. Just pick up the phone."

-- The Beast® Of Carroll County bandit Bits Fall/Winter 2016

Josh Fookes Testimonial

"Knowing that the Bandit could also produce mulch for us was one of the reasons we went that direction. If we went down this road and spent this money on this great piece of equipment, and all it could do was process shingles, and if Caltrans never approved a spec, we were stuck with a machine that could process shingles, but we can't process shingles because we don't have an end market. We wanted a machine that could do versatile types of feedstock."

-- Finding the Value in Shingle Waste Bandit Bits Spring/Summer 2016

PARTS

BEAST PARTS LISTINGS

Part Number	Description
STANDARD TEETH	
900-9904-61	1" Splitter Tooth
900-9911-04	Short Shingle
900-9911-60	NR26
900-9914-75	Shingle Splitter
900-9914-93	1" HD Cutter
FAN TEETH	
900-9904-62	Splitter Fan
900-9904-95	Blunt Nose Splitter Fan
900-9910-92	Short Shingle Fan
900-9911-61	NR26 Fan
900-9911-62	HD Cutter W/Fan
900-9912-09	Shingle Splitter Fan
2" WIDE FAN TEETH	
900-9915-01	2" W Blank Fan
900-9915-03	2" W Double Blunt Nose Splitter Fan
900-9915-04	2" W Double Splitter
900-9915-05	2" W Double 1" Flat Carbide Fan
900-9915-07	2" W 55G Hard Surface Fan (Trash Tooth)
900-9915-08	2" W Double NR26 Fan (Shingle Claw)
900-9916-06	2" W Double Shingle Fan
KNIFE STYLE CUTTERBODY TEETH	
900-9914-96	Double Splitter KSCB
900-9918-86	Triple Splitter KSCB
900-9915-23	Chipper Knife 26/3680
900-9915-26	Chipper Knife 4680
900-9915-24	Wear Block
900-9915-25	Counter Knife
900-9914-97	Double Carbide Cutter KSCB
900-9914-98	Double Blunt Nose Splitter KSCB
900-9914-99	Double NR26 KSCB
900-9915-00	55G Sprinkle Carbide Impregnated KSCB (TT)
900-9916-07	Double Shingle KSCB

PARTS

BEAST PARTS LISTINGS

Part Number	Description
1680 TEETH	
900-9915-15	Double Splitter 1680
900-9915-16	Double Blunt Nose Splitter 1680
900-9915-17	Double Short Shingle 1680
900-9915-18	Double NR26 Carbide 1680 Not Pictured Yet
900-9915-19	2" W G55 Carbide 1680
CUTTERBODIES	
982-100005	Standard 1680
982-2003-57	Knife Style 1680 KSCB
977-200835	Standard 26/3680
977-304720	Replaceable Raker 26/3680
977-2012-34	Knife Style 26/3680 KSCB
983-2004-66	Standard 4680
983-301884	Knife Style 4680 KSCB
983-302327	Replaceable Raker 4680
977-2012-33	Standard 30-Tooth Knife Style 26/3680
977-200800	Standard 30-Tooth 26/3680
977-305134	Standard 30-Tooth Raker Style 26/3680
WIPERS/RAKERS	
900-9915-20	Wiper Insert, Hard Facing 16/26/36/4680
900-9915-21	Wiper Insert, Carbide Sprinkle 16/26/36/4680
977-100056	Raker, 45 Degree
977-200817	Raker, HD 6 Weld (Shingles Only)
977-2011-99	Raker, Standard Forged
983-2004-42	Raker, Standard Forged 4680
983-2004-43	Raker, HD Forged 4680
977-2012-00	Raker, HD Forged
977-2012-01	Raker, 30-Tooth Cutter Head
977-2012-02	Raker, 30-Tooth Cutter Head

PARTS LISTINGS

PARTS LISTINGS

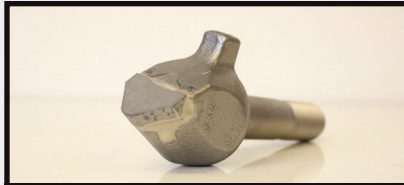
PARTS

STANDARD TEETH



1" SPLITTER TOOTH

PART NO. 900-9904-61



SHORT SHINGLE

PART NO. 900-9911-04



NR26

PART NO. 900-9911-60



SHINGLE SPLITTER

PART NO. 900-9914-75



1" HD CUTTER

PART NO. 900-9914-93

PARTS

FAN TEETH



SPLITTER FAN

PART NO. 900-9904-62



BLUNT NOSE SPLITTER FAN

PART NO. 900-9904-95



SHORT SHINGLE FAN

PART NO. 900-9910-92



NR26 FAN

PART NO. 900-9911-61



HD CUTTER W/ FAN

PART NO. 900-9911-62



SHINGLE SPLITTER FAN

PART NO. 900-9912-09

WEAR PARTS

WEAR PARTS

RECOMMENDATIONS:

.....
We recommend running a minimum of 30 fan teeth in most applications. The fan teeth will help move the ground material through the screen quicker than standard teeth. This will help to reduce wear and increase production while grinding.
.....

PARTS

2" WIDE FAN TEETH



2" W BLANK FAN

PART NO. 900-9915-01



2" W DOUBLE BLUNT NOSE SPLITTER FAN

PART NO. 900-9915-03



2" W DOUBLE SPLITTER

PART NO. 900-9915-04



2" DOUBLE 1" FLAT CARBIDE FAN

PART NO. 900-9915-05



2" W 55G HARD SURFACE FAN (TRASH TOOTH)

PART NO. 900-9915-07



2" W DOUBLE NR26 FAN (SHINGLE CLAW)

PART NO. 900-9915-08

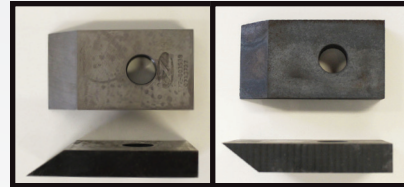


2" W DOUBLE SHINGLE FAN

PART NO. 900-9916-06

PARTS

KNIFE STYLE CUTTERBODY TEETH

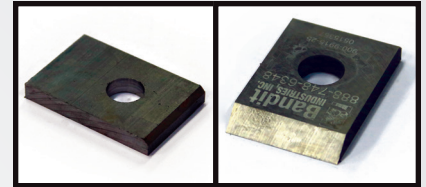


CHIPPER 26/3680 KNIFE

PART NO. 900-9915-23

CHIPPER 4680 KNIFE

PART NO. 900-9915-26



WEAR BLOCK

PART NO. 900-9915-24

COUNTER KNIFE

PART NO. 900-9915-25



DOUBLE SPLITTER KSCB

PART NO. 900-9914-96



DOUBLE CARBIDE CUTTER KSCB

900-9914-97



DOUBLE BLUNT NOSE SPLITTER KSCB

PART NO. 900-9914-98



DOUBLE NR26 KSCB

PART NO. 900-9914-99



55G SPRINKLE CARBIDE IMPREG. KSCB (TM)

PART NO. 900-9915-00



DOUBLE SHINGLE KSCB

PART NO. 900-9916-07



TRIPLE SPLITTER KSCB

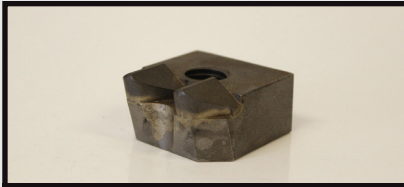
PART NO. 900-9918-86

WEAR PARTS

WEAR PARTS

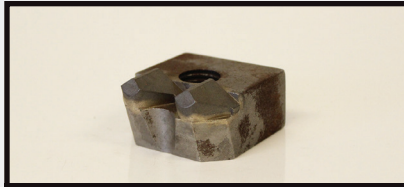
PARTS

1680 TEETH



DOUBLE SPLITTER 1680

PART NO. 900-9915-15



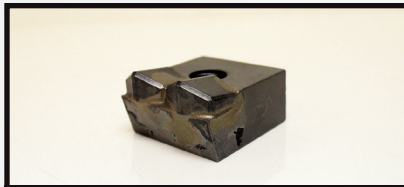
DOUBLE BLUNT NOSE SPLITTER 1680

PART NO. 900-9915-16



DOUBLE SHORT SHINGLE 1680

PART NO. 900-9915-17



DOUBLE NR26 CARBIDE 1680

PART NO. 900-9915-18



2" W G55 CARBIDE 1680

PART NO. 900-9915-19

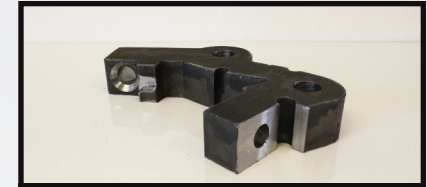
PARTS

CUTTERBODIES



STANDARD 26/3680

PART NO. 977-200835



REPLACEABLE RAKER 26/3680

PART NO. 977-304720



KNIFE STYLE 26/3680 KSCB

PART NO. 977-2012-34



STANDARD 4680

PART NO. 983-200359



KNIFE STYLE 4680 KSCB

PART NO. 983-2004-66



REPLACEABLE RAKER 4680

PART NO. 983-302327

PARTS

CUTTERBODIES



STANDARD 1680

PART NO. 982-100005



KNIFE STYLE 1680 KSCB

PART NO. 982-2003-57



STANDARD 30-TOOTH KNIFE STYLE 26/3680

PART NO. 977-2012-33



STANDARD 30-TOOTH 26/3680

PART NO. 977-2012-70



STANDARD 30-TOOTH RAKER STYLE 26/3680

PART NO. 977-305134

WEAR PARTS

WEAR PARTS

PARTS

WIPERS/RAKERS



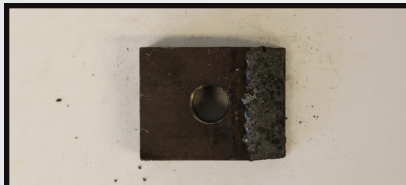
WIPER INSERT, HARD FACING 16/26/36/4680

PART NO. 900-9915-20



WIPER INSERT, CARBIDE SPRINKLE 16/26/36/4680

PART NO. 900-9915-21



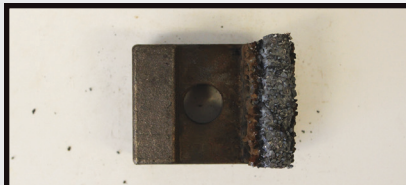
RAKER, 45 DEGREE

PART NO. 977-100056



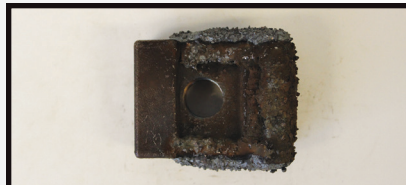
RAKER, HD 6 WELD (SHINGLES ONLY)

PART NO. 977-200817



RAKER, STANDARD FORGED

PART NO. 977-2011-99



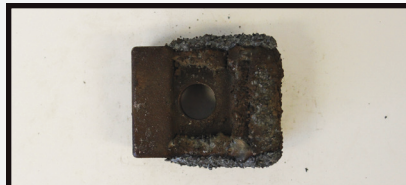
RAKER, HD FORGED

PART NO. 977-2012-00



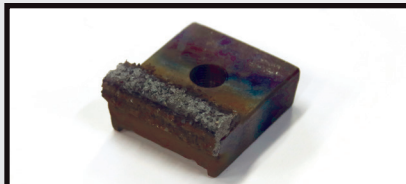
RAKER, STANDARD FORGED 4680

PART NO. 983-2004-42



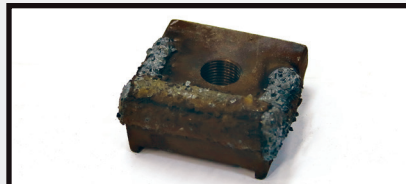
RAKER, HD FORGED 4680

PART NO. 983-2004-43



RAKER, 30-TOOTH CUTTER HEAD

PART NO. 977-2012-01

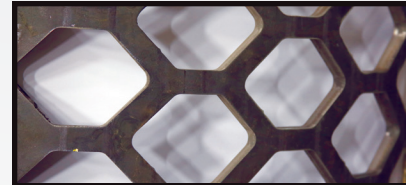


RAKER, 30-TOOTH CUTTER HEAD

PART NO. 977-2012-02

PARTS

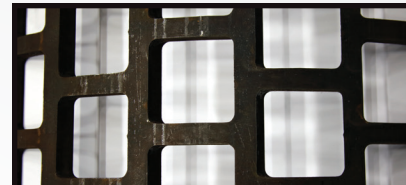
SCREEN SELECTIONS



MODIFIED DIAMOND SCREEN



ROUND SCREEN



SQUARE SCREEN



SQUARE BAFFLED SCREEN

SCREEN VARIATIONS

Available Screen Types:

There are several screen types available. Each are designed to match the user's specific grinding needs, production rate, and desired end-product.

5/8" - 7" Modified Diamond

- Highest production rate
- Less consistent product

1" - 4" Round

- Good for dry material
- Good for consistent product
- Less than square baffle but higher production rate
- Lower than modified diamond

1" - 4" Square Baffled Screen

- Good for dry material
- Very consistent product
- Lower production rate

Screen Variations:

Screen size will vary depending on the desired end-product shape and will be determined by desired end-product consistency.

Modified Diamond Holes:

- Longer stringy-looking end-product, allows material to pass through freely.
- Good for primary grind and applications where high consistency is not necessary.
- Works well in wet green waste where moisture content is the highest

Round Holes:

- Consistent end-product, good for final grind/sizing.

Square Screens:

- Most consistent end-product, good in pallets and material that will splinter.
- Not good in green/wet material.

Square Baffled Screens:

- Most consistent end-product, good in pallets and material that will splinter.
- Limits overs to produce a more uniform end-product.

WEAR PARTS

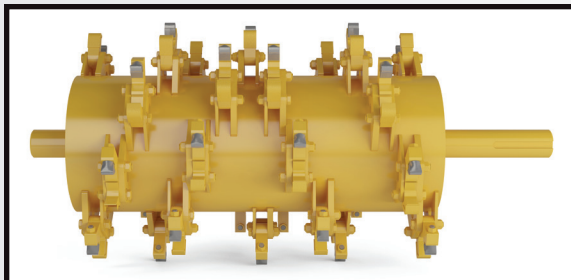
WEAR PARTS

THE BEAST® CUTTERMILL HEADS

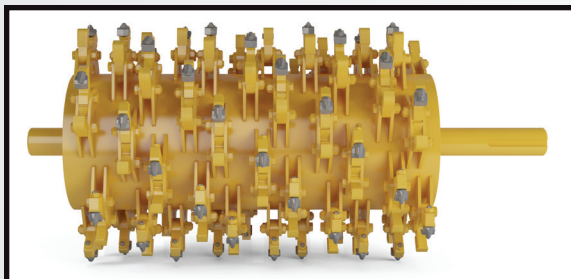
THE BEAST CUTTERMILL HEADS

Cutterhead Information

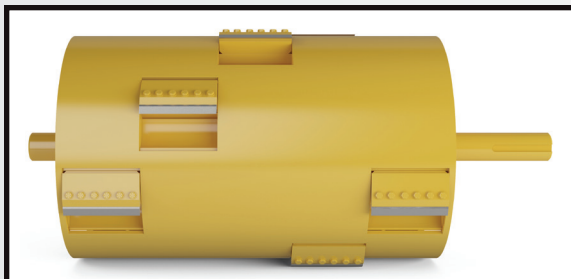
Your cuttermill is fabricated with two spirals of tooth holders. Teeth may be configured in any way needed on the drum to fit your needs. Improperly installed teeth will not grind properly and may damage the cuttermill. Because all applications differ, it is important to determine what tooth combinations perform best under different situations. We encourage you to experiment with different combinations of teeth and screens to obtain production, product and economic goals. Please refer to page 15 for suggested setups for some common materials/applications.



30-TOOTH CUTTERMILL



60-TOOTH CUTTERMILL



CHIPPER DRUM

Mill Configurations:

1680XP:

- 26-Tooth Cuttermill

2680XP:

- 30-Tooth Cuttermill
- 60-Tooth Cuttermill
- Chipper Drum

3680XP:

- 30-Tooth Cuttermill
- 60-Tooth Cuttermill
- Chipper Drum

4680XP:

- 60-Tooth Cuttermill

WOOD & SHINGLE GRINDING

WOOD GRINDING APPLICATIONS: SUGGESTED SETUPS

C&D / Pallets / Dimensional Lumber:

- 30 pieces - Teeth, 2" W 55G Hard Surface (Trash Tooth) / Part No. 900-9915-07
- 30 pieces - Teeth, Blunt Nose Splitter Fan / Part No. 900-9904-95

Chunk Wood:

- 30 pieces - Teeth, 1" Splitter Tooth / Part No. 900-9904-61
- 30 pieces - Teeth, Splitter Fan / Part No. 900-9904-62

Clean Logs/ Whole Trees:

- 30 pieces - Teeth, 1" HD Cutter / Part No. 900-9914-93
- 30 pieces - Teeth, Splitter Fan / Part No. 900-9904-62

Re-Grind:

- 30 pieces - Teeth, 2" W 55G Hard Surface (Trash Tooth) / Part No. 900-9915-07

- 30 pieces - NR26 Fan Teeth / Part No. 900-9911-61

Land Clearing Debris:

- 30 pieces - Teeth, Blunt Nose Splitter Fan / Part No. 900-9904-95
- 30 pieces - Short Shingle Fan / Part No. 900-9910-92

Yard Waste:

- 30 pieces - Teeth, 2" W 55G Hard Surface (Trash Tooth) / Part No. 900-9915-07
- 30 pieces - Teeth, Blunt Nose Splitter Fan / Part No. 900-9904-95

Mulch Coloring:

- 30 pieces - Teeth, 1" Splitter / Part No. 900-9904-61
- 30 pieces - Teeth, Short Shingle / Part No. 900-9911-04

SHINGLE GRINDING APPLICATIONS: SUGGESTED SETUPS

Customers process two primary materials, with the result typically being a 1/2" to 3/8" minus end-product.

The two primary materials processed are:

Factory Reject (Waste) Shingles
Tear-Off Shingles

Typical machine setups to achieve this are:

Screens and Gates, All:

- 5/8" Diamond Screens and Gates

Tear Off Shingles:

- 60 pieces - Teeth, 2" W Double NR26 Fan (Shingle Claw) / Part No. 900-9915-08
- 60 pieces - HD Weld Pattern Raker / Part No. 977-200870

Rakers, Tear Off Shingles:

- 60 pieces - Standard Raker w/ HD Weld Pattern / Part No. 977-2012-00

Factory Waste Shingles:

- 60 pieces - Teeth, Shingle Splitter Fan / Part No. 900-9912-09
- 30 pieces - HD Weld Pattern Raker (Installed near radiator side of machine) / Part No. 977-2012-00
- 30 pieces - HD 6 Weld Shingle Raker (Installed near sheave side of machine) / Part No. 977-200817

Rakers, Factory Waste Shingles:

- 30 pieces - Monster Raker (Installed near sheave side of the mill.) / Part No. 977-200870
- 30 pieces - Monster Raker (Installed near sheave side of the mill.) / Part No. 977-200817

Going to a larger screen/gate will increase product size. 3/4" screens usually give an end product in the 1/2"-5/8" range and a 1" (or what we call 7/8") will give an end-product in the 5/8"-3/4" size range.

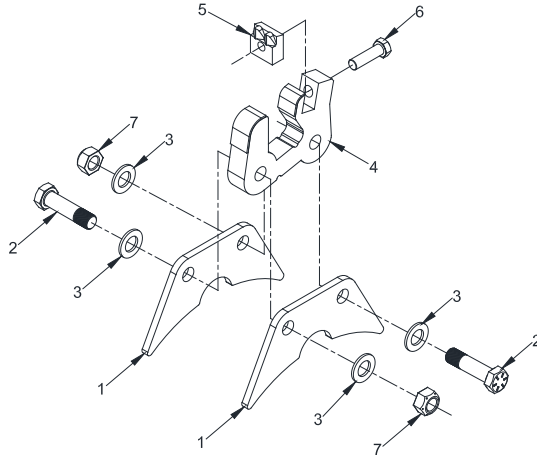
Note: These suggestions are based on our previous experience, but your results may differ. Variables in material, conditions, and machine maintenance can lead to different results. Additional refining of the setup may be required to achieve your desired results.

PARTS

CUTTERHEAD COMPONENTS

1680XP STANDARD STYLE

#	Part Number	Description
1	982-300044	Body Support Arm
2	900-4908-78	Hex Head Bolt
3	900-6907-68	Washer
4	982-100005	Cutter Body
5	**	Cutter Tooth
6	900-4902-78	Hex Head Bolt
7	900-4904-92	Cutter Body Nut

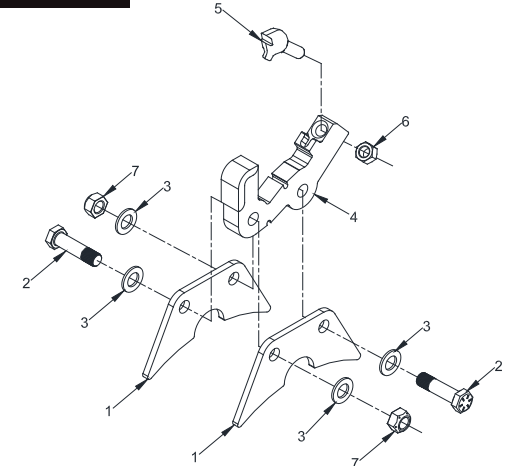


PARTS

CUTTERHEAD COMPONENTS

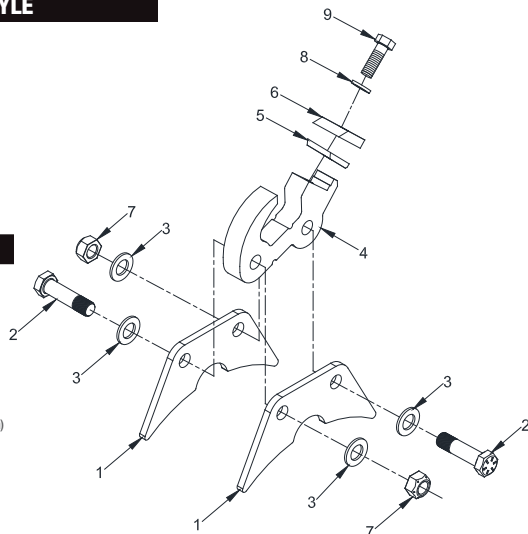
2680XP & 3680XP STANDARD STYLE

#	Part Number	Description
1	977-301087	Body Support Arm
2	900-4908-78	Cutter Body Bolt
3	900-6907-68	Washer
4	977-200835	Cutter Body
5	**	Splitter Tooth
6	900-4901-66	Hex Nut
7	900-4904-92	Cutter Body Nut



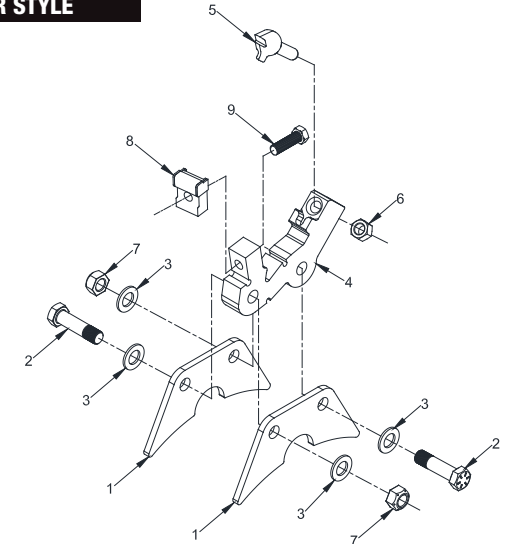
1680XP KNIFE STYLE

#	Part Number	Description
1	982-300044	Body Support Arm
2	900-4908-78	Hex Head Bolt
3	900-6907-68	Washer
4	982-200116	Cutter Body
5A	900-9915-25	Counter Knife
5B	900-9915-24	Wear Block (Not Shown)
6	900-9915-23	Knife
7	900-4904-92	Cutter Body Nut
8	900-4905-91	Nord-Lock Washer
9	900-4916-55	Bolt



2680XP & 3680XP RAKER STYLE

#	Part Number	Description
1	977-301087	Body Support Arm
2	900-4908-78	Cutter Body Bolt
3	900-6907-68	Washer
4	977-304720	Cutter Body
5	**	Cutter Tooth
6	900-4901-66	Hex Nut
7	900-4904-92	Cutter Body Nut
8	**	Forged Raker
9	900-4918-11	Hex Head Bolt



WEAR PARTS

WEAR PARTS

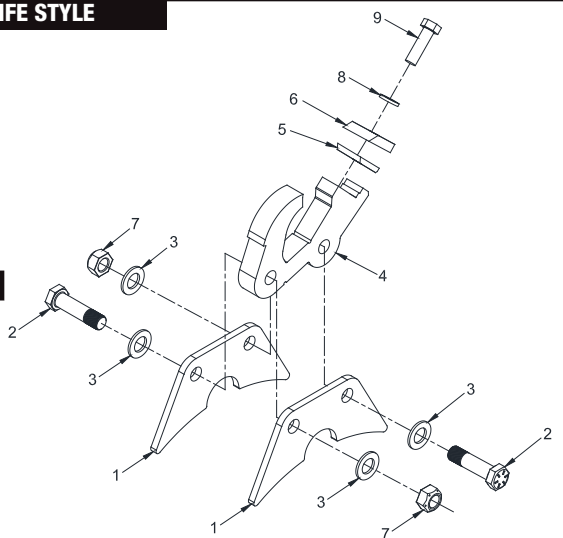
PARTS

CUTTERHEAD COMPONENTS

2680XP & 3680XP KNIFE STYLE

Part Number Description

1	977-301087	Body Support Arm
2	900-4908-78	Cutter Body Bolt
3	900-6907-68	Washer
4	977-900722	Cutter Body
5	**	Counter Knife
6	**	Knife
7	900-4904-92	Cutter Body Nut
8	900-4905-91	Nord-Lock Washer
9	900-4916-55	Bolt



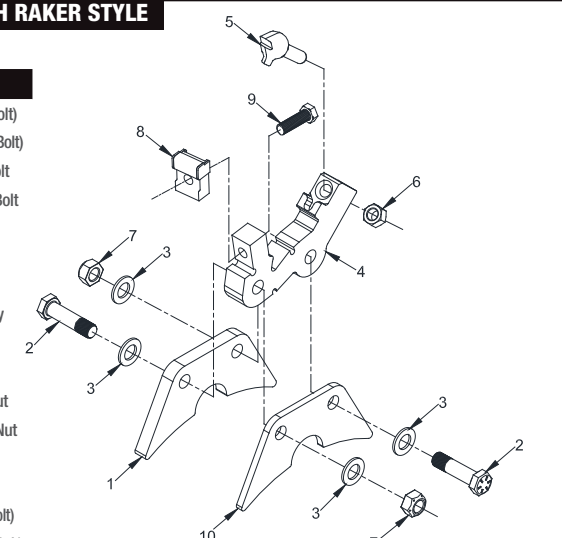
PARTS

CUTTERHEAD COMPONENTS

2680XP & 3680XP 30-TOOTH RAKER STYLE

Part Number Description

1	977-304031	1" Thick Arm (1" Bolt)
1*	977-3061-58	1" Thick Arm (1-1/4" Bolt)
2	900-4916-41	1" Cutter Body Bolt
2*	900-4921-88	1-1/4" Cutter Body Bolt
3	900-6907-68	1" Washer
3*	900-4921-90	1-1/4" Washer
4	977-200800	1" Cutter Body
4*	977-3061-62	1-1/4" Cutter Body
5	**	Cutter Tooth
6	900-4901-66	Hex Nut
7	900-4904-92	1" Cutter Body Nut
7*	900-4921-91	1-1/4" Cutter Body Nut
8	**	Forged Raker
9	900-4918-11	Raker Bolt
10	977-301087	1/2" Thick Arm (1" Bolt)
10*	977-3061-50	1/2" Thick Arm (1-1/4" Bolt)

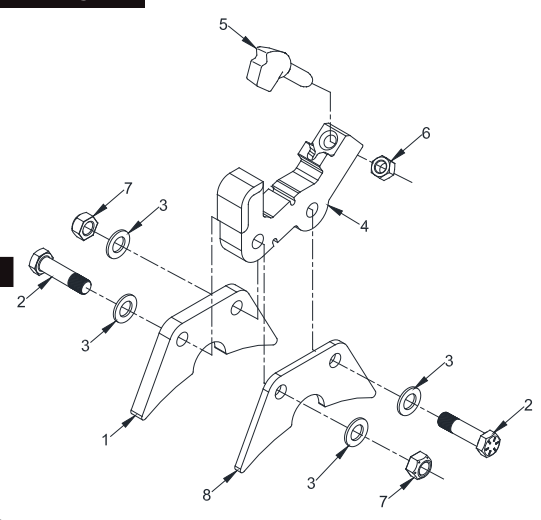


*Your cutterbodies may require a 1-1/4" bolt. Contact your Parts Representative for more information.

2680XP & 3680XP 30-TOOTH STANDARD STYLE

Part Number Description

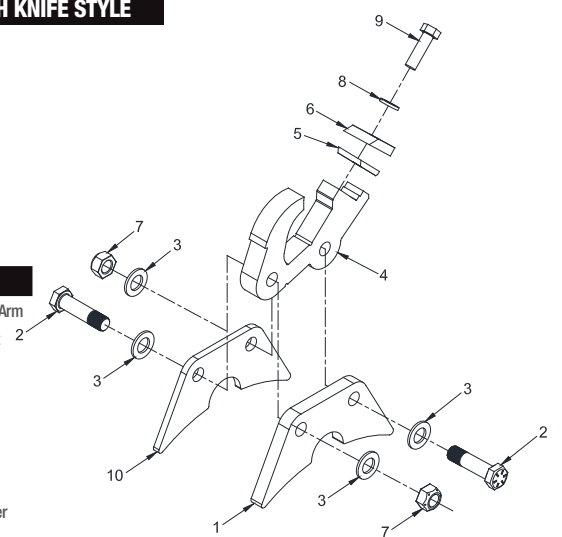
1	977-304031	1" Thick Cutter Body Support System
2	900-4916-41	Cutter Body Bolt
3	900-6907-68	Washer
4	977-200800	Cutter Body
5	**	Cutter Tooth
6	900-4901-66	Hex Nut
7	900-4904-92	Cutter Body Nut
8	977-301087	Cutter Body Support Arm



2680XP & 3680XP 30-TOOTH KNIFE STYLE

Part Number Description

1	977-301087	Cutter Body Support Arm
2	900-4916-41	Cutter Body Bolt
3	900-6907-68	Washer
4	977-2012-33	Cutter Body
5	**	Counter Knife
6	**	Knife
7	900-4904-92	Cutter Body Nut
8	900-4905-91	Nord-Lock Washer
9	900-4916-55	Bolt



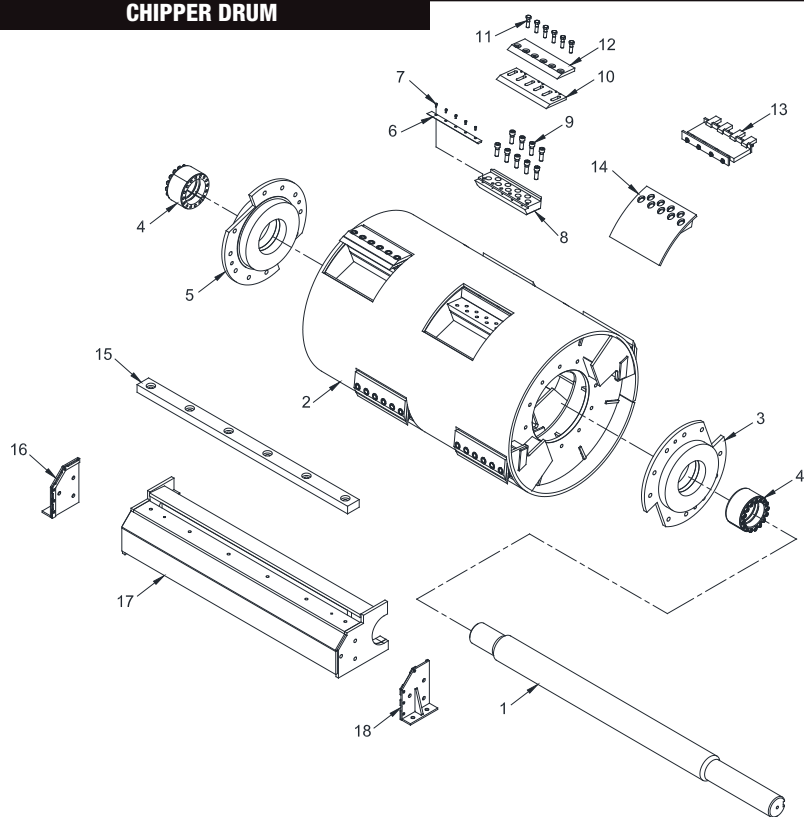
WEAR PARTS

WEAR PARTS

PARTS

CUTTERHEAD COMPONENTS

CHIPPER DRUM



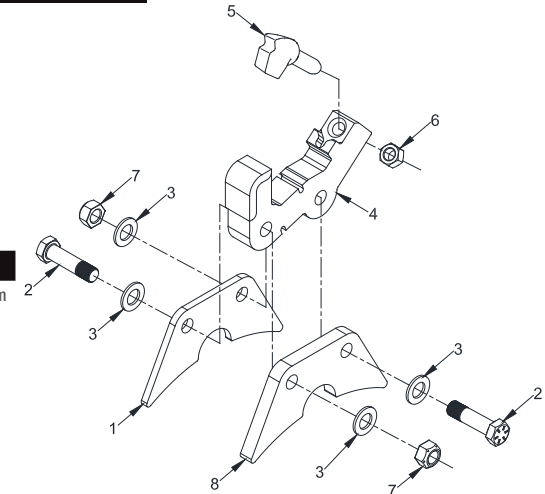
#	Part Number	Description
1	977-301570	Chipper Drum Shaft
2	977-100707	Chipper Drum Head Assembly (Includes 1-12)
3A	977-201150	Drum Head End Plate Assembly
3B	900-4913-18	7/8"-9NC x 2-1/4" Hex Head Bolt (Not Shown)
4	900-1914-34	Keyless Taper Lock Bushing
5	977-201149	Drum Head End Plate Assembly
6	977-305734	Counter Knife
7	900-4906-76	1/4"-20NC x 1/2" SHCS Counter Knife Bolt
8	977-3059-57	Knife Holder - Babbitt Style Knife (Requires Counter Knife)
9	900-4914-30	3/4"-10NC x 2-1/4" SHCS Knife Holder Bolt

#	Part Number	Description
10	900-9904-82	Chipper Knife - Babbitt Style
11	900-4914-27	5/8"-18NF x 2-1/4" Hex Head Bolt
12	977-3059-58	Chipper Knife Top Clamp
13	959-1000-02	Knife Gauge
14	977-2012-35	Pocket Filler
15	977-305774	Chipper Drum Anvil Wear Bar
16	978-2004-16	Chipper Drum Anvil Cover - Curb Side
17	977-201164	Chipper Drum Anvil Assembly
18	978-2004-15	Chipper Drum Anvil Cover - Road Side
19	900-9906-90	Ladle (Not Shown)
20	900-9900-60	1/2" Ball of Babbitt (Not Shown)

PARTS

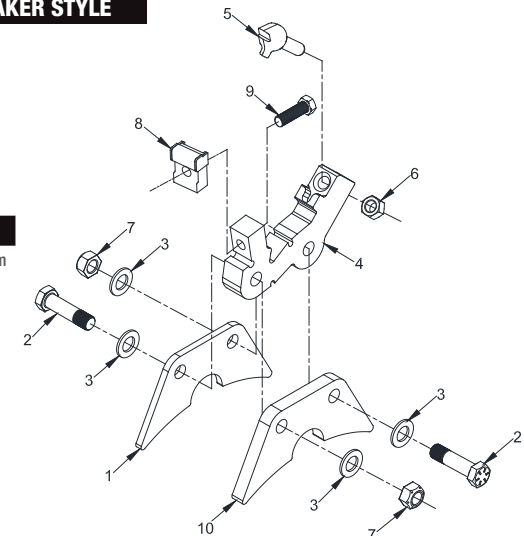
CUTTERHEAD COMPONENTS

3680XP HD CUTTERHEAD STANDARD STYLE



#	Part Number	Description
1	977-301087	Cutter Body Support Arm
2	900-4915-91	Cutter Body Bolt
3	900-6907-68	Washer
4	977-200835	Cutter Body
5	**	Cutter Tooth
6	900-4901-66	Hex Nut
7	900-4904-92	Cutter Body Nut
8	977-304031	1" Cutter Body Support Arm

3680XP HD CUTTERHEAD RAKER STYLE



#	Part Number	Description
1	977-301087	Cutter Body Support Arm
2	900-4915-91	Cutter Body Bolt
3	900-6907-68	Washer
4	977-304720	Cutter Body
5	**	Cutter Tooth
6	900-4901-66	Hex Nut
7	900-4904-92	Cutter Body Nut
8	**	Forged Raker
9	900-4918-11	Raker Bolt
10	977-304031	1" Thick Cutter Body Support Arm

WEAR PARTS

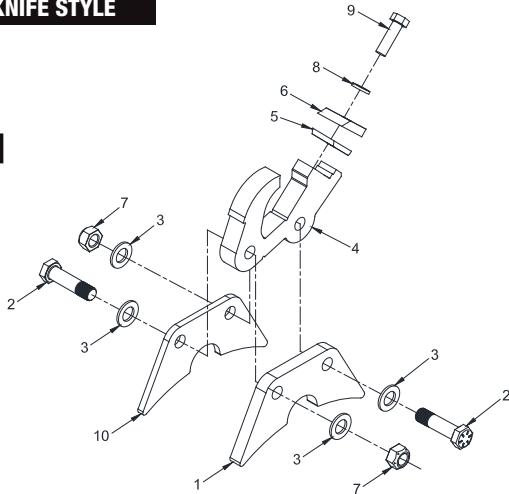
WEAR PARTS

PARTS

CUTTERHEAD COMPONENTS

3680XP HD CUTTERHEAD KNIFE STYLE

#	Part Number	Description
1	977-304031	1" Thick Body Support Arm
2	900-4916-41	Cutter Body Bolt
3	900-6907-68	Washer
4	977-2012-34	Cutter Body
5A	**	Counter Knife
5B	900-9915-24	Wear Block (Not Shown)
6	**	Knife
7	900-4904-92	Cutter Body Nut
8	900-4905-91	Nord-Lock Washer
9	900-4916-55	Bolt
10	977-301087	Cutter Body Support

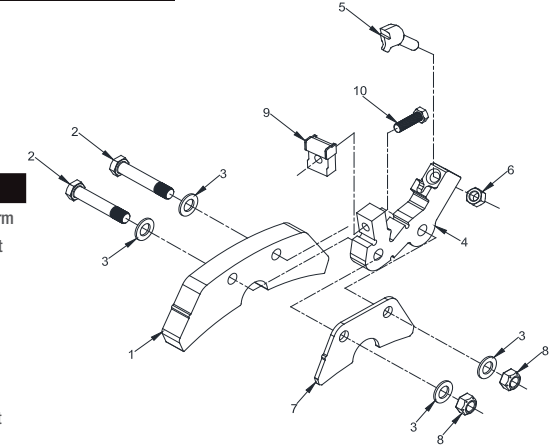


PARTS

CUTTERHEAD COMPONENTS

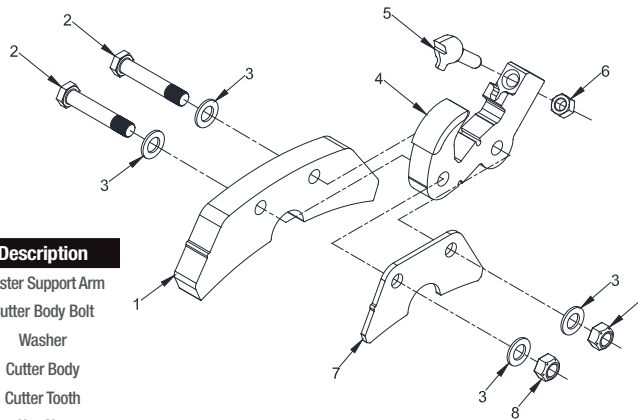
4680XP RAKER STYLE

#	Part Number	Description
1	983-300867	Master Support Arm
2	900-4908-10	Cutter Body Bolt
3	900-6907-68	Washer
4	983-200359	Cutter Body
5	**	Cutter Tooth
6	900-4901-66	Hex Nut
7	983-300868	Support Arm
8	900-4904-92	Cutter Body Nut
9	**	Forged Raker
10	900-4902-78	Hex Head Bolt



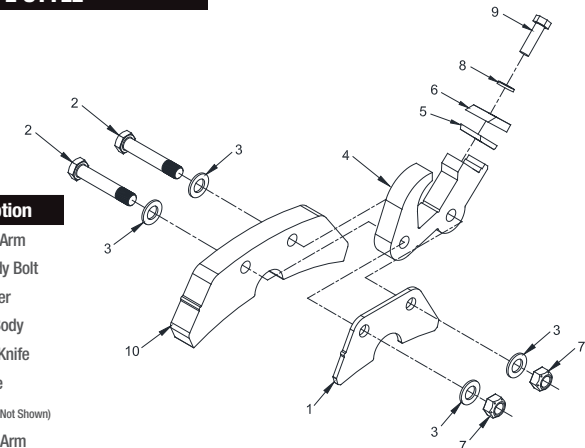
4680XP STANDARD STYLE

#	Part Number	Description
1	983-300867	Master Support Arm
2	900-4908-10	Cutter Body Bolt
3	900-6907-68	Washer
4	983-200359	Cutter Body
5	**	Cutter Tooth
6	900-4901-66	Hex Nut
7	983-300868	Support Arm
8	900-4904-92	Cutter Body Nut



4680XP KNIFE STYLE

#	Part Number	Description
1	983-300868	Support Arm
2	900-4908-10	Cutter Body Bolt
3	900-6907-68	Washer
4	983-301884	Cutter Body
5	977-900739	Counter Knife
6A	977-900740	Knife
6B	900-9915-24	Wear Block (Not Shown)
7	983-300868	Support Arm
8	900-4905-91	Nord-Lock Washer
9	900-4916-55	Bolt
10	983-300867	Master Support Arm



WEAR PARTS

WEAR PARTS



Bandit
INDUSTRIES, INC.

***Thank you for your
interest in Beast
Wear Parts!***

Our commitment to you is to quickly and conveniently provide the best quality wear parts, the best service and the best support for you and your equipment.



Bandit Industries, Inc. | 6750 Millbrook Road • Remus, MI 49340
www.banditchippers.com • 1 (800) 952-0178

(1135-16) KP3K-BWPB