

# BANDIT HM-6420

## 40" Capacity Hammermill Grinder

Introducing the **Model HM-6420!** With the addition of this new hammermill model, Bandit is now the only manufacturer offering horizontal grinder models with a cuttermill or hammermill. This **highly productive** 40" capacity grinder was designed and manufactured as an alternative solution for those grinding applications that may contain contaminants.



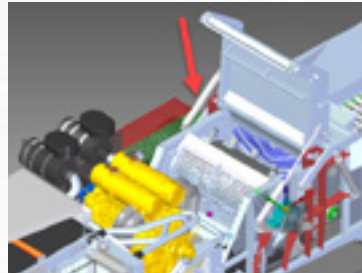
### HEAVY-DUTY HAMMERMILL

Each hammer bit holder is securely attached by recessing into the mill pocket. A top plate covers the pocket and is attached and removed by six hex bolts. The hammer tip is attached to each holder utilizing two bolts. With this set-up, the mill hardware is easy to maintain and replace.



### EFFICIENT SCREEN CHANGE PROCESS

The screen changing process is designed to minimize downtime and can be accessed through the top of the machine.



### IMPACT DETECTION SYSTEM

An impact detection system is standard and designed to limit damage if a contaminant is struck inside the grinding chamber. Once an impact is made, the grinder will idle down, disengage the clutch, and reverse the feed.



# Bandit

EMPLOYEE-OWNED

6750 Millbrook Rd. • Remus, MI 49340 • **1-800-952-0178**

FIND US ONLINE



[WWW.BANDITCHIPPERS.COM](http://WWW.BANDITCHIPPERS.COM)

Hand-Fed Chippers • Stump Grinders • Whole Tree Chippers  
Horizontal Grinders • Attachments

All specifications, dimensions and options are subject to change without notice, and were current at the time of printing. Dimensions may vary, depending on options and engines selected. Bandit Industries, Inc. reserves the right to change designs, specifications and options without prior notice. © 2024 Bandit Industries, Inc. All Rights Reserved.

**CALL YOUR LOCAL BANDIT SALES REPRESENTATIVE TO SCHEDULE A DEMONSTRATION TODAY!**

HM-6420\_2024-03

**SPECIFICATIONS**

MEASUREMENTS	HM-6420	
Length:	44' 4"	13.51 m
Width:	11'3"	3.42 m
Height:	12'	3.65 m
Weight:	102,000 lbs. (46,266 kg)	
Engines:	1,200 HP (894.8 kW)	
Fuel Tank:	500 gal. (1,893 L)	
Hydraulic Tank:	120 gal. (454 L)	

DIMENSIONS		
Capacity:	40" Capacity	1.02 m Capacity
Opening:	40" tall x 64" wide	1.02 m tall x 1.63 m wide
Hammermill:	50" dia. x 66" wide	1.27 m dia. x 1.62 m wide
Hammer Tips:	20	
Feed Wheel:	(1) 38.5" dia. x 64.75" wide	(1) .87 m dia. x 1.64 m wide

Infeed Conveyor: Slat-style infeed conveyor, featuring adjustable speed settings with maximum drive speed of 110 ft/min. Conveyor is 15' 6" long x 64" wide.

Discharge Conveyor: 26' 4" long x 56" wide with a 16' 7" stacking height

**ENGINE OPTION 1**

Make and Model: CAT C32

Gross HP: 1200 HP (894.8 kW)

Fan: Reversing

Clutch Type: HPT015 PT Tech fluid

**COMMITTED TO QUALITY & PRODUCTIVITY**

Since 1983, Bandit has manufactured equipment for a multitude of wood waste processing markets. The vision since the beginning, is to build quality, highly productive, easy to maintain equipment providing years of dependable service.

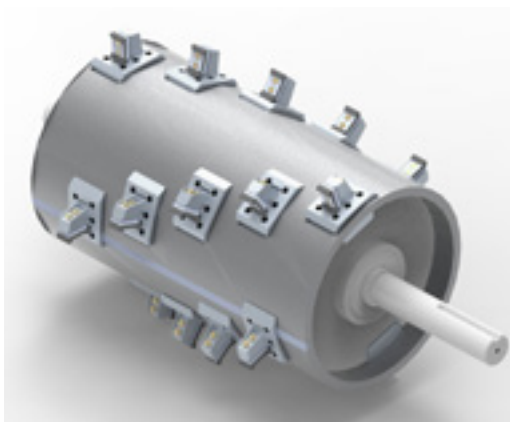
The commitment for quality, innovation and dedication is instilled in every employee and is one of the main reasons why Bandit became an Employee-Owned Company (ESOP) in 2018. These core values ensure each Bandit machine will leave the factory ready to exceed your expectations.

**GO-ANYWHERE TRACK MOBILITY**

A Caterpillar 325EL steel track undercarriage is standard allowing the grinder to easily be maneuvered from one location to the next. All track functions are controlled by the standard radio remote control and features two speed drive settings.



**HAMMERMILL**



Hand-Fed Chippers • Stump Grinders • Whole Tree Chippers  
Horizontal Grinders • Track Carriers • Attachments